

Chapter 10 Means of Egress

Where do the Signs
lead to:

EXIT

NWBOCA



1 Hour
ZOOM Meeting

EXITING Requirements

- January 12, 2021
- NWBOCA Luncheon



Presenter

- Don Plass, CFCO, MCP, LEED AP, BPI
- Management Staff II
- HR Green, Inc.
- McHenry, Illinois
- dplass@hrgreen.com



All rights reserved. The material in this manual may be reproduced only with the permission of HR Green, Inc. Additional copies may be obtained by contacting HR Green, Inc. at the contact information provided.

This manual is designed to provide general information regarding the subject matter covered. The reader understands that the publisher is not engaged in the practice of rendering legal, accounting, medical or other professional services. This manual **should not** be used as a substitute for obtaining advice and counsel from a qualified Professional of your choice.



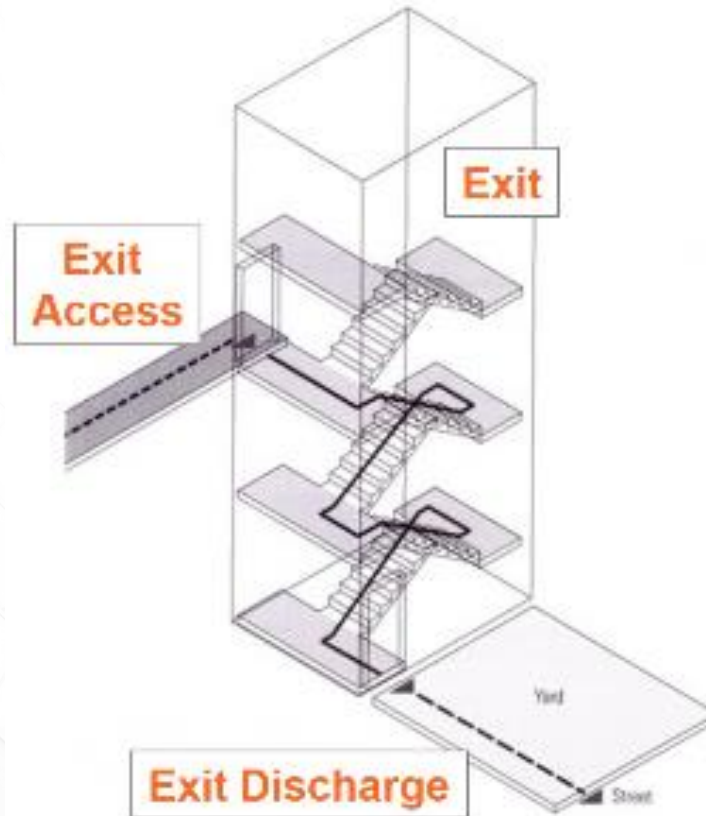
Webinar Description

A One-hour Webinar examining and analyzing the Exiting requirements for the Means of Egress in a logical order.

It is designed to familiarize the code official, fire official, plan examiner and field inspectors with many of the more important elements of the Means of Egress.

Chapter 10

Means of Egress



Means of Egress Definition

- A continuous and unobstructed path of vertical and horizontal egress travel from any **OCCUPIED** portion of a building or structure **to a public way**
- A means of egress consists of three separate and distinct parts:
 - **Exit Access**
 - **EXIT**
 - **Exit discharge (to a Public Way)**

Section 107.2.3 Means of Egress

- Submittal documents shall show in sufficient detail:
 - The location, construction, size and character of all portions of the means of egress
 - Including the path of the EXIT discharge **to the Public Way**

Section 1003.6

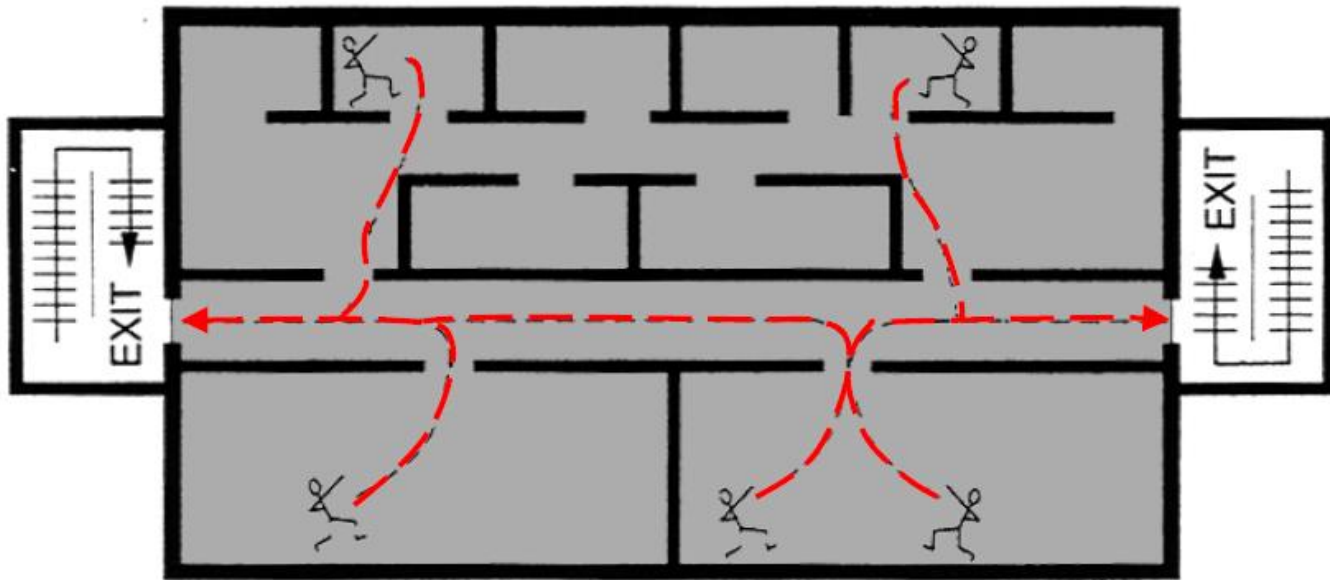
Means of Egress Continuity

- The path of travel shall not be interrupted
- Obstructions shall not be placed in the minimum width
- The minimum width shall not be diminished



EXIT Access

- The portion of a means of egress system that leads from **any occupied portion** of a building or structure to an EXIT



Section 1006

Number of EXITS and Exit Access Doorways

- These are determined by Table 1006.2.1
Spaces With One Exit or Exit Access Doorway
- Two or more exits or exit access doorways shall be provided if occupancy is more than 49
- **If** the occupancy or the common egress path of travel exceed the values listed in the Table more than one door will be required

Table 1006.2.1 Spaces With One EXIT or Exit Access Doorway

**TABLE 1006.2.1
SPACES WITH ONE EXIT OR EXIT ACCESS DOORWAY**

OCCUPANCY	MAXIMUM OCCUPANT LOAD OF SPACE	MAXIMUM COMMON PATH OF EGRESS TRAVEL DISTANCE (feet)		
		Without Sprinkler System (feet)		With Sprinkler System (feet)
		Occupant Load		
		OL ≤ 30	OL > 30	
A ^c , E, M	49	75	75	75 ^a
B	49	100	75	100 ^a
F	49	75	75	100 ^a
H-1, H-2, H-3	3	NP	NP	25 ^b
H-4, H-5	10	NP	NP	75 ^b
I-1, I-2 ^d , I-4	10	NP	NP	75 ^a
I-3	10	NP	NP	100 ^a
R-1	10	NP	NP	75 ^a
R-2	20	NP	NP	125 ^a
R-3 ^e	20	NP	NP	125 ^{a, f}
R-4 ^e	20	NP	NP	125 ^{a, g}
S ^f	29	100	75	100 ^a
U	49	100	75	75 ^a

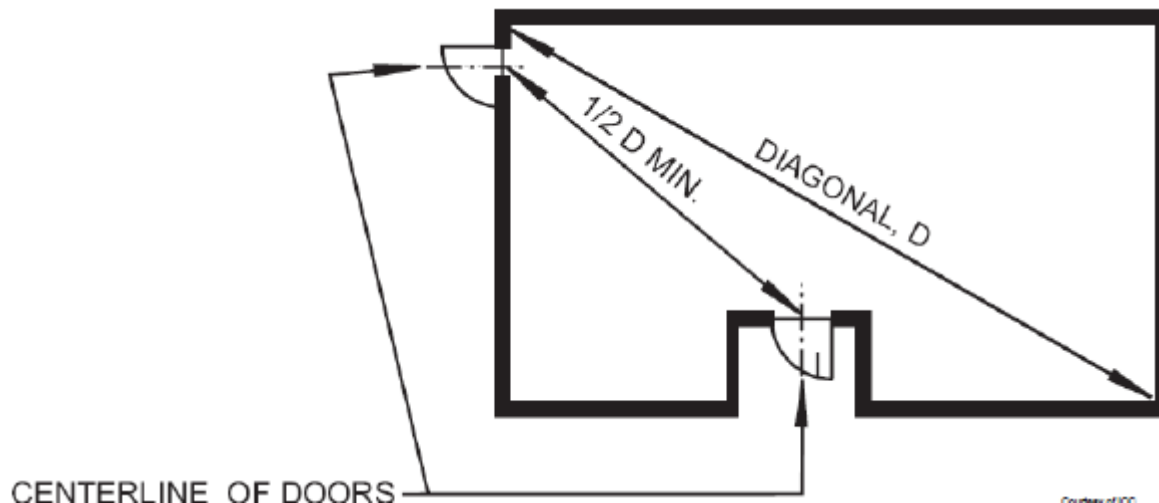
For SI: 1 foot = 304.8 mm.

NP = Not Permitted.

Section 1007

Exit and Exit Access Doorway Configuration

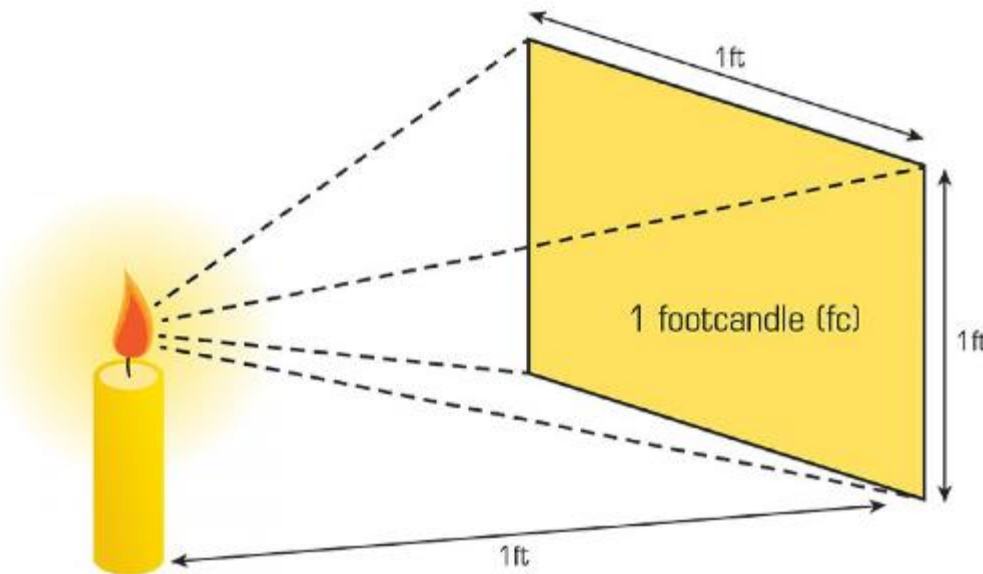
- Where two EXITS, exit access doorways, or exit access stairways are required they shall be separated in accordance with this chapter



Section 1008

Means of Egress Illumination

- The room or space shall be illuminated at all times they are occupied
- The illumination shall not be less than 1 footcandle measured **at the walking surface**



Section 1016

Exit Access

- Exit access is permitted through an enclosed elevator lobby
- Exit Access shall not pass through an adjoining or intervening room or space EXCEPT:
 - If they **are** accessory to one another
 - **Are not** a Group H
 - Provides a discernable path of egress to an EXIT
- Egress shall not pass-through **Kitchens**, storage rooms, closets

Section 1016.2

Exit Access EXCEPTIONS (2)

- Means of Egress is not prohibited through stockrooms in Group M where all the following are met:
 - Stock is the same hazard
 - Not more than 50% goes through the stockroom
 - The stockroom is not subject to locking from egress side
 - There is a demarcated minimum 44-inch-wide aisle defined by a full or partial-height wall that will maintain the required width and will lead directly from retail area to the EXIT without obstructions

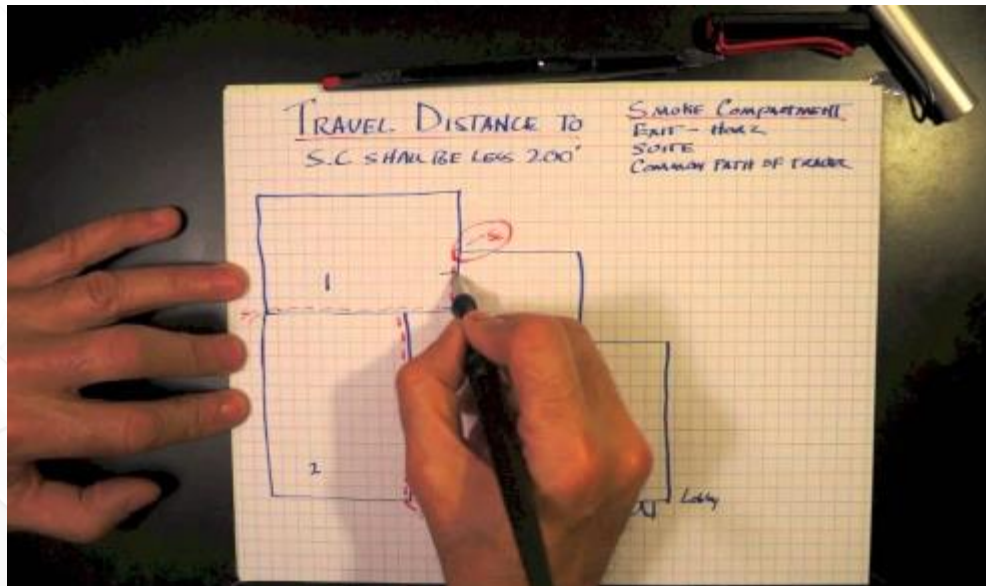
Section 1017

Exit Access Travel Distance

**TABLE 1017.2
EXIT ACCESS TRAVEL DISTANCE^a**

OCCUPANCY	WITHOUT SPRINKLER SYSTEM (feet)	WITH SPRINKLER SYSTEM (feet)
A, E, F-1, M, R, S-1	200	250 ^b
I-1	Not Permitted	250 ^b
B	200	300 ^c
F-2, S-2, U	300	400 ^c
H-1	Not Permitted	75 ^d
H-2	Not Permitted	100 ^d
H-3	Not Permitted	150 ^d
H-4	Not Permitted	175 ^d
H-5	Not Permitted	200 ^c
I-2, I-3, I-4	Not Permitted	200 ^c

- Exit Access travel is measured from the most remote point in a building, room or space
- The measurement is taken along the natural unobstructed path of travel to an EXIT



Section 1018.3

Aisles in Groups B and M

- Aisle width criteria is based on the occupant load served by the aisle
- The minimum width is the same as corridors
- There is required on at least one side of each aisle a minimum 30-inch-wide aisle accessway



Section 1020

Corridors

- Corridors shall be fire resistance rated in accordance with Table 1020.1
- Minimum corridor width is determined by Table 1020.2

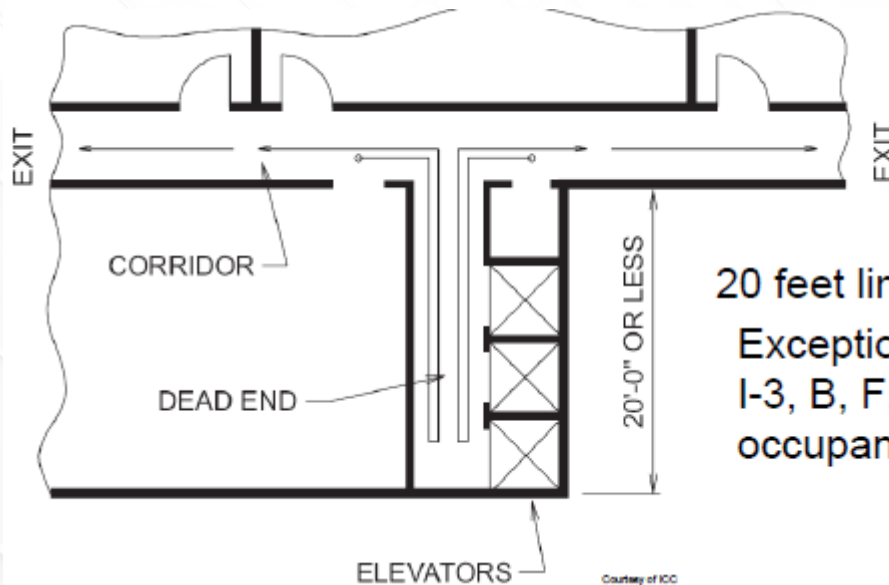
**TABLE 1020.1
CORRIDOR FIRE-RESISTANCE RATING**

OCCUPANCY	OCCUPANT LOAD SERVED BY CORRIDOR	REQUIRED FIRE-RESISTANCE RATING (hours)	
		Without sprinkler system	With sprinkler system ^c
H-1, H-2, H-3	All	Not Permitted	1
H-4, H-5	Greater than 30	Not Permitted	1
A, B, E, F, M, S, U	Greater than 30	1	0
R	Greater than 10	Not Permitted	0.5
I-2 ^a , I-4	All	Not Permitted	0
I-1, I-3	All	Not Permitted	1 ^b

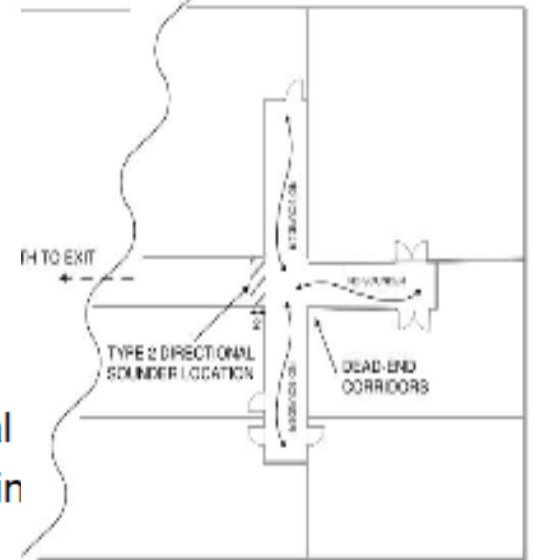


Section 1020.4 Dead Ends

- Where more than one exit or an exit access doorway is required, the exit access shall be arranged such that dead-end corridors do not exceeds 20 feet in length



20 feet limit in general
Exceptions for certain
I-3, B, F, and R-2
occupancies



EXIT

- That portion of the means of egress system between the Exit Access and the Exit Discharge to the Public Way
- Exit components include
 - Exterior EXIT doors at the level of Exit Discharge
 - Interior EXIT stairways
 - EXIT passageways
 - Exterior EXIT stairways
 - Horizontal Exits



Section 1013

EXIT Signs

- Exits and Exit Access Doorways shall be marked by an approved exit sign which is readily visible from any direction of egress travel



Section 1013.2

Low-level exit signs in Group R-1

- Additional low-level exit signs shall be provided in all areas serving guest rooms in Group R-1 occupancies



Section 1013.3 Illumination

- EXIT signs shall be internally or externally illuminated



Section 1013.5

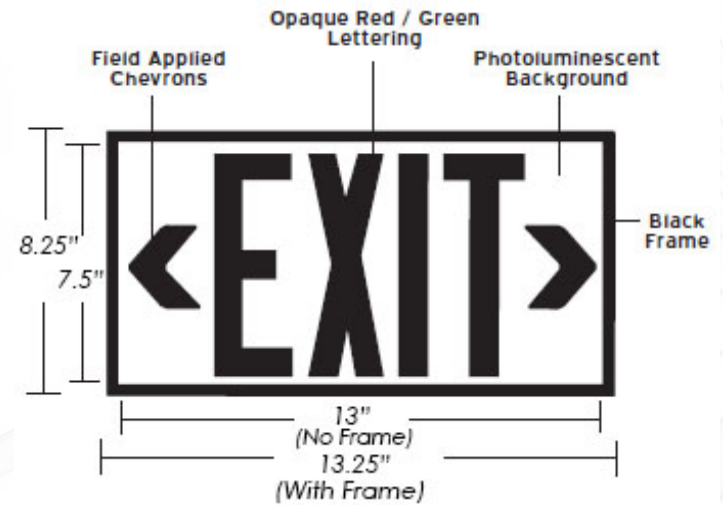
Internally Illuminated exit signs

- Electrically powered, self-luminous and photoluminescent shall be listed and labeled in accordance with UL 924



Section 1013.6.1 Graphics

- Plainly legible letters not less than 6 inches high with the principal strokes of the letters not less than $\frac{3}{4}$ inch wide
- The word EXIT shall have letters having a width not less than 2 inches, except for the letter “I”, and the minimum spacing between letters shall not be less than $\frac{3}{8}$ INCH



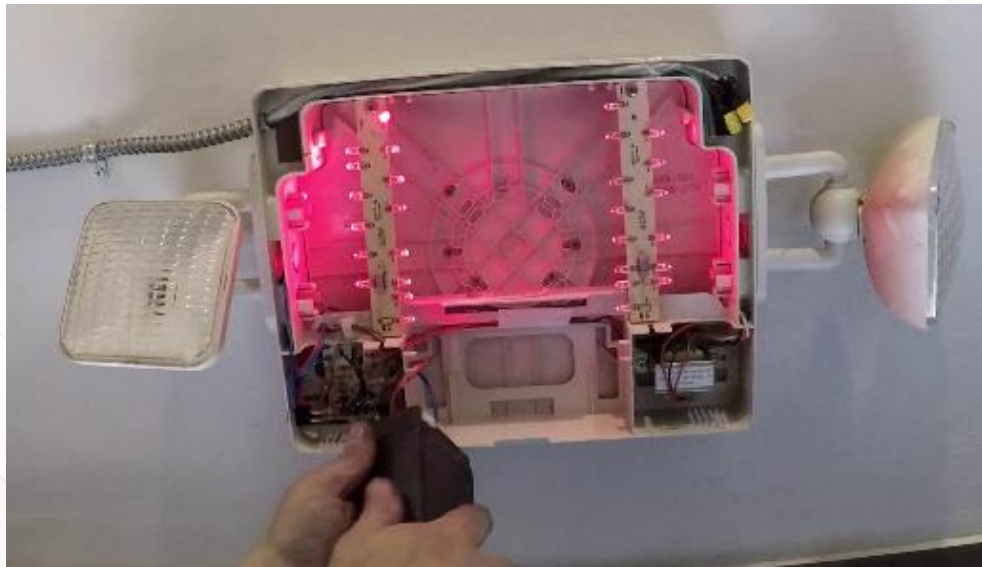
- The word “**EXIT**” shall be in high contrast with the background and shall be clearly discernable when the means of exit sign illumination is or is not energized
- If a chevron directional indicator is provided as part of the exit sign, the construction shall be that such that the direction of the chevron indicator cannot be readily changed

EXIT

Section 1013.6.3

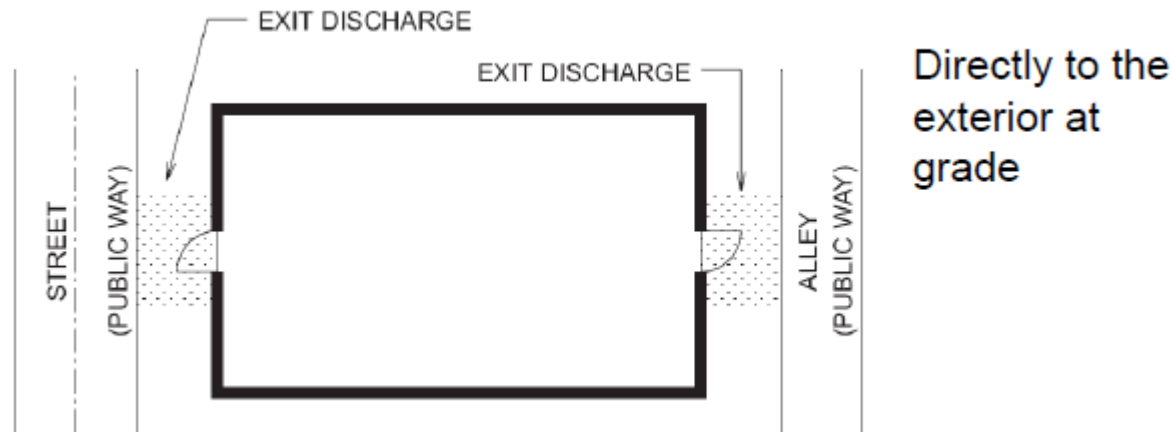
Power Source

- EXIT signs shall be illuminated at ALL times
- In case of primary power loss, illumination shall be provided by an emergency power system, storage batteries, or an on-site generator



EXIT Discharge

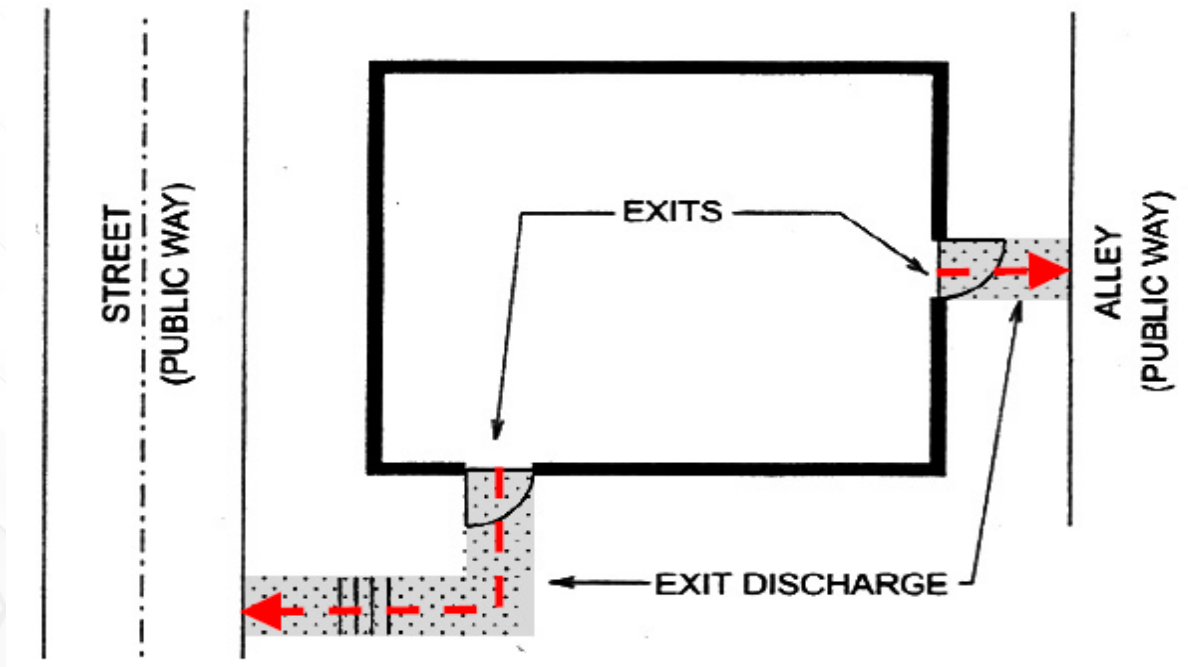
- That portion of a means of egress system between the termination of an exit and a public way



- The exit discharge shall not re-enter a building

EXIT Discharge to Public Way

- The exit discharge shall provide a direct and unobstructed access to a public way



Definition of Public Way

- A street, alley or other parcel of land open to the outside air leading to a street, that has been deeded, dedicated or otherwise permanently appropriated to the public for public use and which has a clear width and height of not less than 10 feet.



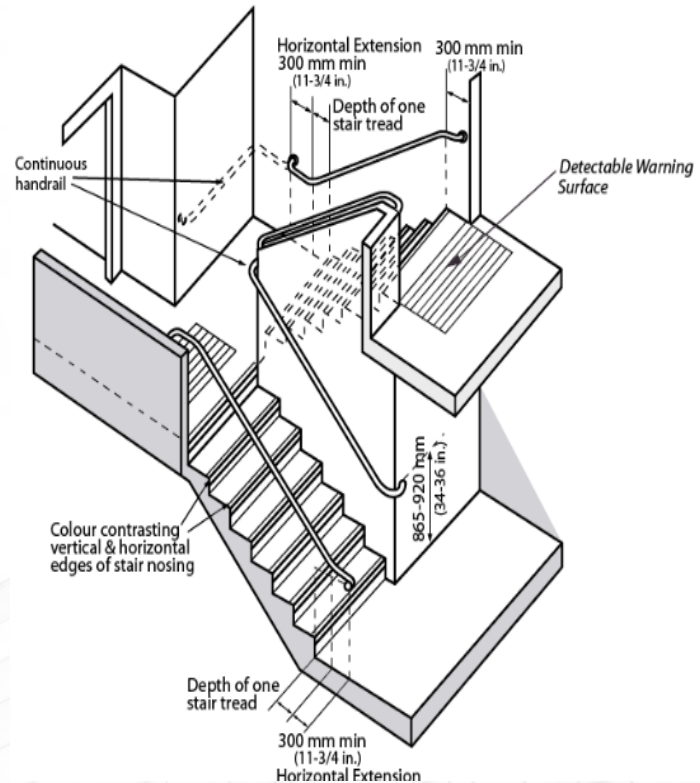
Section 1023

Interior EXIT Stairways

- Shall be enclosed and lead directly to the exterior of the building (or)
- Shall be extended to the exterior of the building with an exit passageway
- An Interior EXIT Stairway shall not be used for any purpose other than as a means of egress and a circulation path

Section 1023.2 Construction

- Enclosures for Interior exit stairways shall be constructed as fire barriers
- The fire-resistance rating shall be not less than 2-hours were connecting four stories or more
- Not less than 1-hour were connecting less than four stories



Section 1023.3

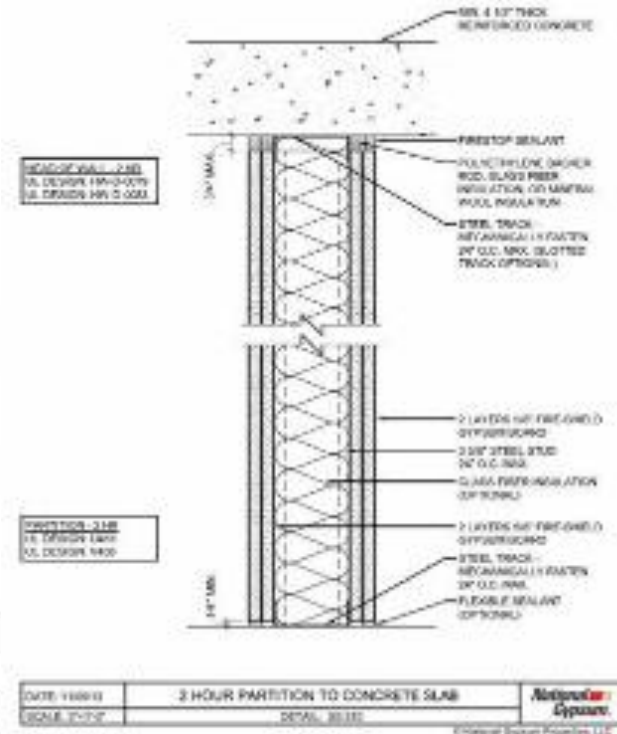
Termination

- Interior Exit Stairways shall terminate at an exit discharge or a public way



Section 1024 Exit Passageways

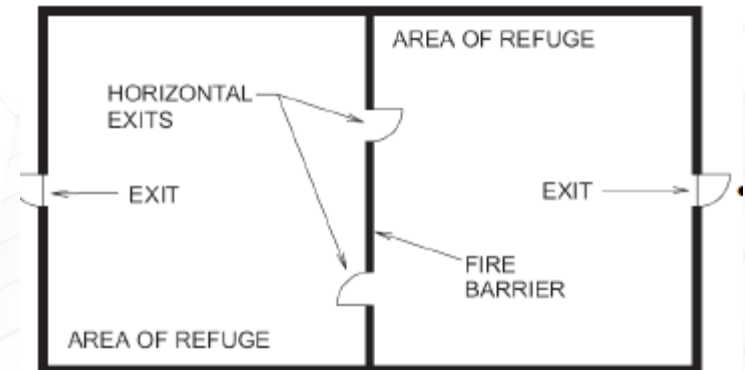
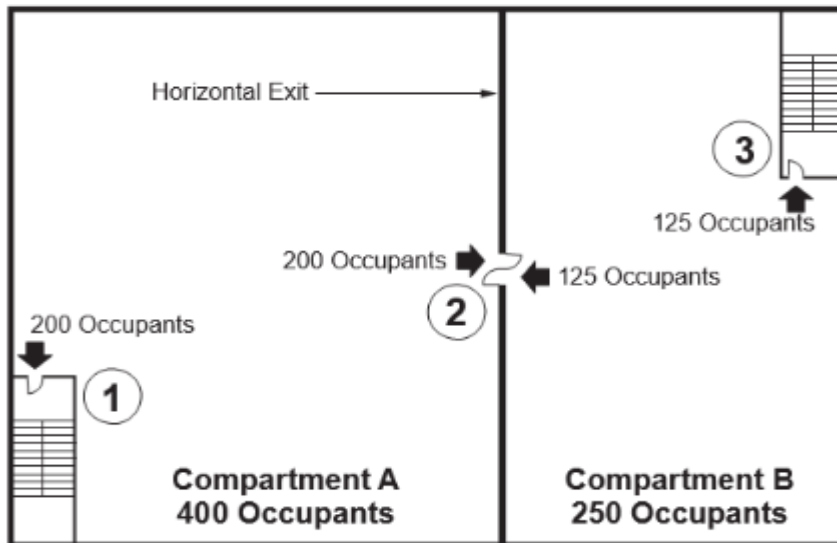
- An Exit passageway is a component that is separated from other interior spaces of a building or structure by fire-resistance-rated construction and opening protectives, and provides for a protected path of egress travel in a horizontal direction to an EXIT or to the exit discharge



Section 1026

Horizontal Exits

- Horizontal exits can provide up to 50 percent of the exits from a given area of a building
- The intention of a Horizontal exit is that during a fire event the occupants of a floor will transfer from one fire area to the other





HR Green, Inc.

Building & Code Services

- Plan Review
- Inspections
- Code Enforcement
- Permit Technician
- Administrative Support
- ISBE- School
 - Plan Review & Inspections
- Code Updates
- Permit Fee Analysis
- Facility Assessments
- Training

For more information contact:

**Don Plass, CFCO, MCP, LEED AP, BPI
Master Code Professional**

**Frank Urbina, NCARB, AIA, ALA, APA
Group Leader – Governmental Services
Associate | Licensed Architect**

420 N. Front Street | McHenry, IL 6005-5528
Main 815.385.1778 | Fax 815.385.1781
Direct 815.759.8344 | Cell 815.345.6227
HRGREEN.COM